



ade inTaiwan

Knobs

Material

Zn : Zinc (zamak)

Al : extruded Aluminum, die-casted Aluminum

Cu : Brass

St : steel, carbon steel

SUS: stainless steel

POM

How to read

396 I Zn >> 396 : item number, Zn : Material
40,64, >> size in mm without [], inch with [1],
for handles usually means
size between central hole and central hole

862 I Zn >> 862 : item number, Zn : Material
D16xH21 >> D : diameter, H : Height

Plated colors

C : chrome plating (polished chrome)

DC : matchrome

SC : Satin chrome

BRC : brushed chrome

N : nickel plating (polished nickel)

NBR : nickel brushed

DN : mat nickel

SN : satin nickel

B : black nickel

AB : antique bronze brushed

AE : antique brass brushed

Coated colors

W : white

BM : black

S : silver

AL : almond

GRE : grey

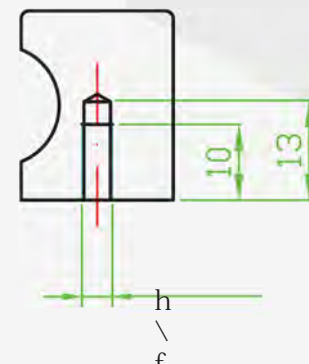
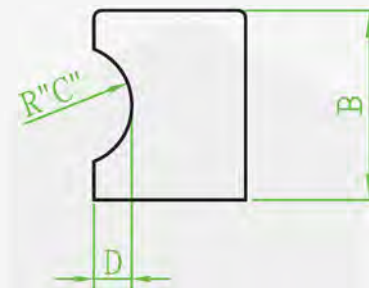
Anodized colors

We provide custom-made colors no matter on plating or coating.

Contact us if you need special colors.



item number	5	6	7	8
52-00660-303XXX-1	15	22	6	3
52-00660-307XXX-1	20	25	8	5
52-00660-309XXX-1	25	30	9	6
52-00660-310XXX-1	30	30	10	9





8846IA1, Zn
D31 x H38



8847IA1, Zn
D23 x H30





887 fish I Zn
50Lx25H mm

888 seahorse I Zn
65Lx26H mm





6071cu
D24 x H27
D25 x H27



6091cu
D24 x H33



610 | cu
D29 x H22
D31.5 x H22
D32 x H22



622 | cu
D25 x H23
D35 x H34



626 | cu
D25 x H26
D30 x H31



613 lcu
D30 x H23, D25 x H23
D30 x H24, D35 x H25
D40 x H26



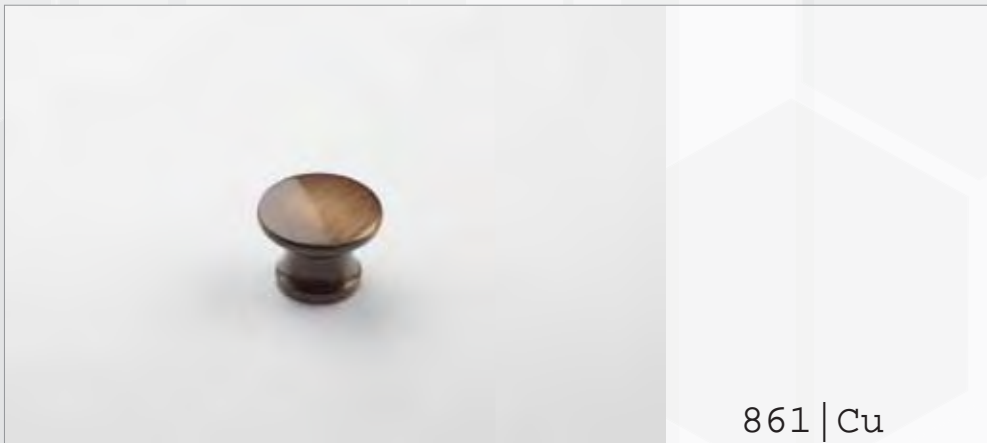
648 lcu, zn
D32 x H26, D34 x H27
D34 x H23. 5



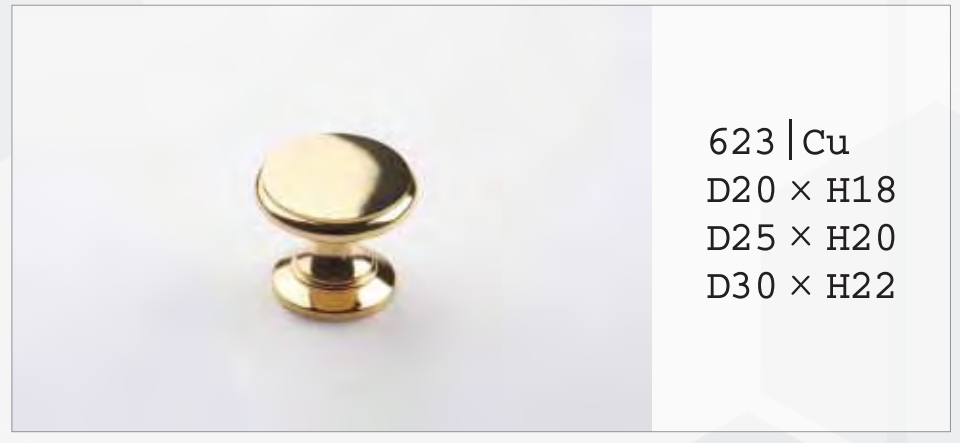
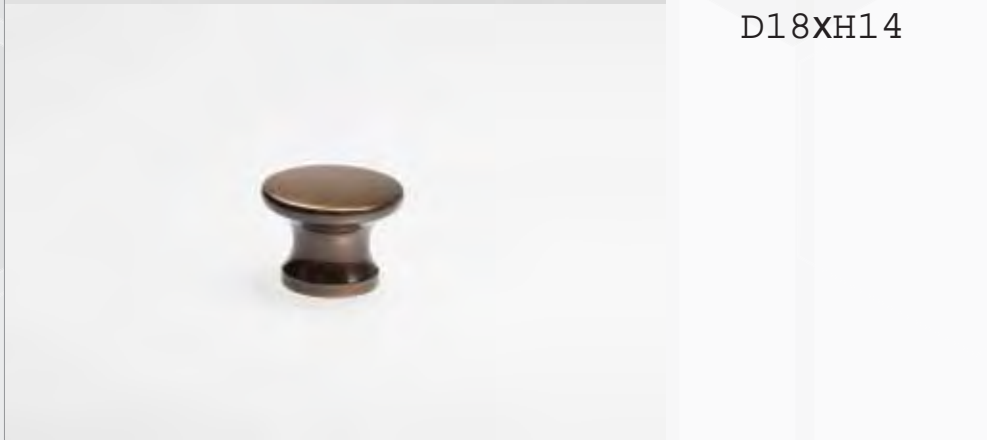
615 | cu
D25 x H24, D30 x H28
D32 x H24, D40 x H30



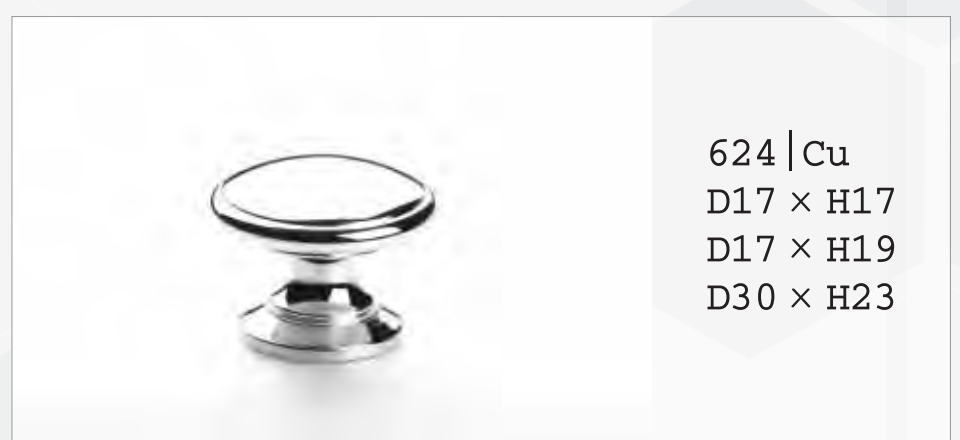
621 | cu
D24 x H20



861 | Cu
D18xH14



623 | Cu
D20 × H18
D25 × H20
D30 × H22



624 | Cu
D17 × H17
D17 × H19
D30 × H23



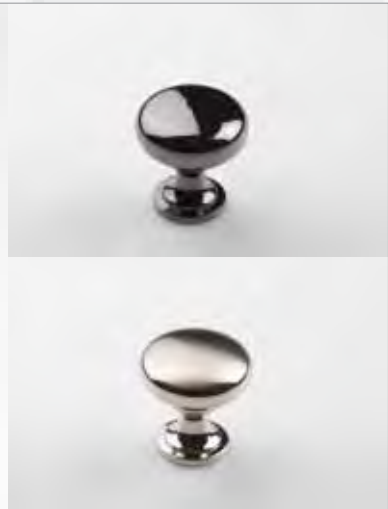
646 lcu
D18 x H24



807 lcu, sus
D19 x H20
D25 x H25
D20 x H24



704 lcu
D32 x H31



678 | Cu, Zn
D28 x H29, D30 x H29, D32 x H31, D38 x H36



649, 649H | Cu, Cu Hollow
D32 x H30, D38 x H35



652 | cu
D30 x H22



683 | cu
D31 x H39



6701cu
D30 x H26



6711cu
D31 x H26



7401A1, Zn
D29 x H37



7411cu, zn
D38 x H28.5



so21cu, Al
D14 x H22



ao11cu
D20 x H26
D30 x H30



8031cu, Al
D13 x H22.5



8061cu, Al
D14 x H22



8521A1
L31 x H28



88011A1
D30 x H26



8241cu
D25 x H20



862 | zn
D16 x H21



878 | zn
D28 x H24
D33 x H27



894 | cu
D14 x H17