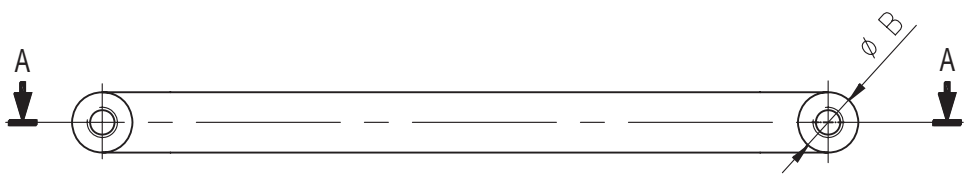


SECTION:A-A



Material	C.C.	Height	Grip Dia	Thread
	(C)	(D)	(B)	(A)
Extruded Aluminum Extruded Brass Extruded SUS303 Extruded SUS304 Extruded SUS316	64 mm	32 mm	8 mm or 10mm	M4 or M5
	96 mm	32 mm		
	128 mm	32 mm		
	160 mm	32 mm		
	192mm	35 mm		
	224mm	35 mm		
	256mm	35mm		8-32 or 6-32
	3"	32 mm		
	4"	32 mm		
	5"	32 mm		
	6"	32 mm		
	7"	35mm		
	8"	35mm		
	10"	35mm		

Please specify you material, thread, diameter(B), C.C.(C), and height(D). Custom-made sizes are also welcomed.